

# CASE FILE



**PRICE & COMPANY**  
Solutions Grounded in Experience

SITE CIVIL IMPROVEMENT ↔ EROSION CONTROL ↔ SURFACE WATER QUALITY

GeoPro® Learning Tool

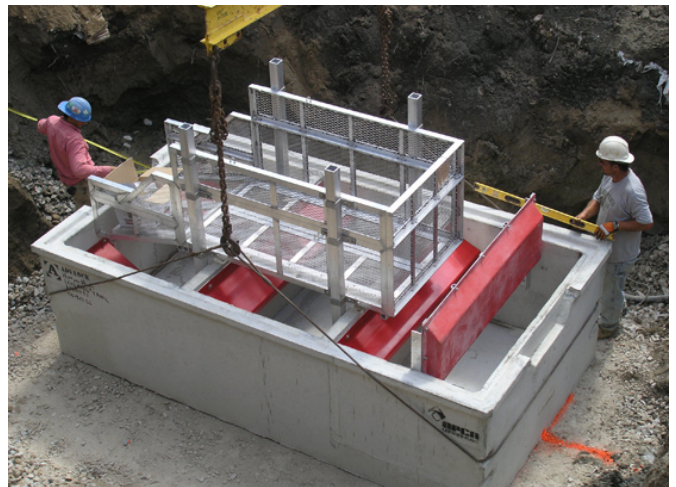
September 26, 2008

## Huron High School, Ann Arbor, MI Nutrient Separating Baffle Box treats storm drain water under full-flow conditions

Recognizing the value of treating all stormwater flowing within a storm drain, *Beckett and Raeder, Inc.* specified the use of a **Nutrient Separating Baffle Box [NSBB]** on the Huron High School project. The NSBB, model 6-12, fit the requirements of not just enabling an on-line design flow of 43 cfs, but treating this flow to reduce sediments, hydrocarbons, nutrients, litter, organic matter as well as bacteriological loadings during subsequent flushes. And this treatment unit could deliver an 80% TSS reduction level for flows as high as 24 cfs, complete this task within an approximate 7' x 13' space and retrofit into the existing drain system due to minimization of head-loss.

With the excavation and base gravel in-place, *Anglin Civil Contractors, Ltd.* installed the NSBB in approximately 2.5 hours, including the time to remove knockouts for the two 27" pipes. *Anglin's* crew first set the bottom unit, containing the installed internal operating parts. Next came the placement of three concrete mid-sections, required for the 13.5' depth from grade to exit pipe invert. Installation became complete as the top section was lowered into position. All four ship-lap joints were sealed via a double row of gaskets set between the sections as well as an external membrane wrap.

**Nutrient Separating Baffle Boxes** offer unique improvements to storm drain water quality treatment. Whether project performance criteria focus on contaminant removal efficiencies, high flow rate treatment, retrofit capability, spacial need constraints, capital outlay or maintenance program cost reduction, the field-proven technologies inherent within the NSBB units are worthy of consideration. For addition information, visit [our web site](#), contact your *Regional Representative* or visit the [manufacturer's web site](#).



Base unit with internal operating parts installed



First mid-section being lowered into position



PRICEANDCOMPANY.COM

®Trademark of Price and Company, Inc.

Metro Grand Rapids, MI  
425 36th Street SW, Wyoming, MI 49548-2108 Toll Free: 800-248-8230

Metro Detroit, MI  
29165 Wall Street, Wixom, MI 48393-3525 Toll Free: 866-960-4300